

As a Known Customer, are your Airfreight Shipments “Tamper Evident”?

The CAA rule part 109 states that “A known customer must have appropriate systems and procedures in place to ensure that every consignment of cargo that is forwarded to a RACA is not tampered with when sent by the known customer to the RACA, and that the cargo is protected in a manner that enables the RACA to readily identify whether the consignment has been tampered with”

So what is “Tamper Evident” packaging, that will ensure that SB can readily identify if your cargo has been tampered with?

Tamper Evident packing doesn’t have to be expensive security seals or fancy security tape. We have below some examples of what is, and isn’t tamper evident, to help you make sure that your cargo that SB sends as Airfreight will remain “Tamper Evident” through its journey to your customer.



Although this is taped, as the cardboard carton lid has slightly dipped in transit, it can allow someone to access the contents through the gap of the tape. Tape needs to be secure and if necessary taped across the lid to ensure it remains sealed.



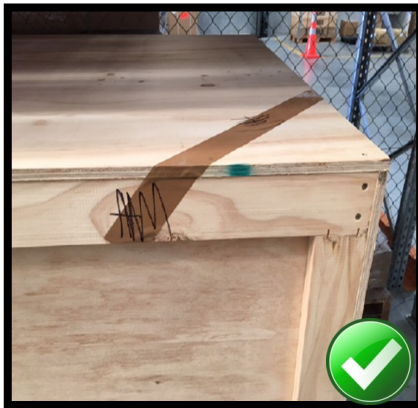
Although the pallet has been shrink wrapped, it has lifted from the front corner of the pallet, the top of the pallet is also open and therefore not tamper evident.



Because of its irregular size, there is no way to be sure if this has been packed by the shipper, or may have been tampered with in transit and re-sealed. All the shipper needs to do is add a seal, marking or label to the taped seal to easily identify it being from the known shipper.



This pallet has been shrink-wrapped and then taped to make it clear if any tampering had occur during transit. The shrink-wrap doesn’t need to be black, and the tape doesn’t have to be a security seal, it can easily be your company seal that is unique to you.



This crate has been sealed with just standard brown parcel tape on all 4 corners. It has been made unique by simply adding the signature of the person responsible for packing the crate across the tape. Then if the lid was removed, the seals would be broken and clearly identified. This is an easy no additional cost option.



This carton is sealed on all sides with Unique tape, that would easily identify if it had been tampered with.



The pallet has now been shrink-wrapped on the top of the pallet, and the front corner has been re attached, Unique tape has been applied both on the top and bottom of the pallet making any attempt to tamper with it evident. Again, this doesn’t have to be security tape, but just showing some unique labelling or Marking / Signature on it.

Any cargo that is received from a Known Customer that has broken seals / or damage etc. and may show signs of having the potential to be tampered with, will need to be inspected and re-sealed before we can present to the Airline for carriage.

We hope these examples have helped you in understanding the phrase “Tamper Evident” and that they will assist you in finding a method that is suitable to your business.